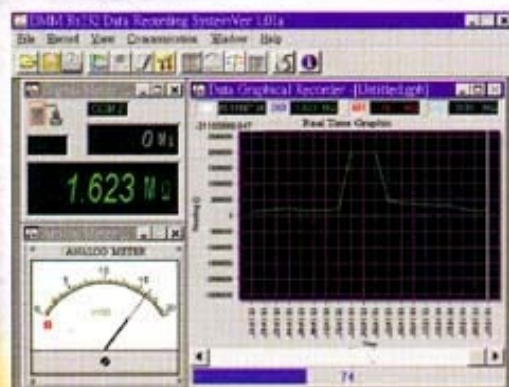


Perfect Balance Of Price & Performance !



BM200 Series
Practical DMM

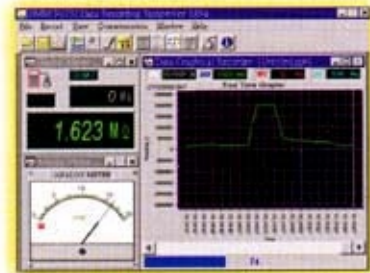
BRYMEN[®]
BRIGHT PEOPLE'S CHOICE
<http://www.brymen.com.tw>



BM201



BM202



BS20X



BC20X

BM202	BM201	FUNCTION & FEATURE
•	•	OPTICAL ISOLATED RS232 PC INTERFACE CAPABILITY
•	•	SOFTWARE FOR WIN 95/98 (OPTIONAL PURCHASE)
•	•	WIRELESS ELECTRIC FIELD (EF) DETECTION
•		K-TYPE TEMPERATURE -20°C TO 300°C
•		FREQUENCY 30Hz TO 200kHz
•		CAPACITANCE 1pF TO 25μF
•	•	0.5% BASIC ACCURACY
•	•	FAST MEASUREMENTS
•	•	FULLY AUTO-RANGING
•	•	RELATIVE ZERO MODE
•	•	AUDIBLE CONTINUITY
•	•	AUTO POWER OFF
•	•	DATA HOLD
•	•	DIODE TEST
•	•	DCA 0.1μA TO 20A
•	•	ACA 0.1μA TO 20A
•	•	ACV 0.1mV TO 750V
•	•	DCV 0.1mV TO 1000V
•	•	OHM 0.1Ω TO 25MΩ
•	•	PROTECTIVE HOLSTER
•	•	FIRE RETARDED CASE
•	•	SPLASH PROOF CONSTRUCTION
•	•	LARGE EASY TO READ LCD DISPLAY
•	•	TRANSIENT PROTECTION UP TO 6.5kV 1.2/50μs SURGE
•	•	LVD MEETS EN61010-1 CAT II 1kVDC/750VAC & CAT III 600VAC/DC
•	•	EMC MEETS EN55022/A1 CLASS B, EN50082-1, IEC801-2, & IEC801-3

An Affordable All Purpose Field Service Tool ... Now Can Also Work With Your Computer!

WIRELESS ELECTRIC FIELD (EF) DETECTION
DETECTS LIVE LINE VOLTAGE WITHOUT TOUCHING
IDEAL FOR DISTINGUISHING LIVE OR EARTH CONNECTION,
AND DETECTS ELECTRIC FIELD RADIATION
(FROM COMPUTER MONITOR ETC)

RS232 PC INTERFACE CAPABILITY
OPTICAL ISOLATED CABLE WITH
DATA RECORDING SYSTEM SOFTWARE
FOR WIN 95/98 (OPTIONAL PURCHASE)

FULLY AUTORANGING
SHORTENS THE TIME TO TEST
AND INCREASES THE EASE OF USE

RANGE
AUTORANGING WITH MANUAL-
RANGING OVERRIDE

FUNCTION SELECTION
CONVENIENTLY TOGGLE
BETWEEN PRIMARY &
SECONDARY FUNCTIONS

AUDIBLE CONTINUITY
FOR QUICK OPEN-SHORT
TESTS ON SWITCHES,
FUSES, AND WIRES

DIODE TEST
FOR CHECKING DIODES
AND RECTIFIERS

CAPACITANCE
AUTORANGING WITH
600V PROTECTION

PROTECTIVE HOLSTER
INCREASES PRODUCT DURABILITY

0.5% BASIC ACCURACY
WITH LARGE EASY TO READ DISPLAY

AUTO POWER OFF (APO)
TO EXTEND BATTERY LIFE

FAST MEASUREMENTS
DATA UPDATES 3 TIMES / SEC

FREQUENCY
WITH DUTY CYCLE READINGS

RELATIVE ZERO MODE
FOR CONVENIENT READINGS
COMPARISON & OFFSET

DATA HOLD
FREEZES THE DISPLAYING
READING FOR LATER VIEW

K-TYPE TEMPERATURE
°C (OR OPTIONAL °F)
MEASUREMENTS

TRANSIENT PROTECTION
UP TO 6.5kV 1.2/50µs SURGE,
MORE CONFIDENCE FOR USERS

SPLASH PROOF CONSTRUCTION
FOR HARSH ENVIRONMENT

EMC
MEETS EN55022/A1 CLASS B,
EN50082-1, IEC801-2, IEC801-3

LVD
MEETS EN61010-1 CAT III
11.5mm BASIC CREEPAGE
& CLEARANCE

FIRE RETARDED CASE
FOR REINFORCED SAFETY

BM202 MULTIMETER BRYMEN

AUTO RS 232

220.2

Select Range Hz.% Rel Δ Hold

Ω A mA μA K-Temp

V OFF A +

μA mA COM

MAX 10A FUSED MAX 0.25A FUSED 750V/1kV CAT II 600V CAT III

Optical Isolated RS232 Interface

BM201 & BM202 GENERAL SPECIFICATIONS

Display : 3-2/3 digits 2500 counts LCD display
Update Rate :
 Digital Data: 3 per second nominal;
Low Battery: Below approx. 2.4V
Operating Temperature : 0°C to 35°C, 0-80% R.H.;
 35°C to 40°C, 0-70% R.H.
Storage Temperature : -20°C to 60°C, 80% R.H.
 (with battery removed)
Temperature Coefficient : nominal 0.15 x (specified accuracy)/°C @ (0°C-18°C or 28°C-40°C), or otherwise specified
Power Supply : 1.5V AA Size battery X 2
Sensing : Average sensing

Safety : Meets EN61010-1, UL3111-1, CSA C22.2 NO.1010-1, and IEC1010-1 CAT III for 600V DC & AC, and CAT II for 1kVDC & 750VAC
Transient protection : 6.5kV (1.2/50µs surge)
E.M.C. : Meets EN55022(1994/A1; 1995/Class B) and EN55082-1(1992)
Overload Protections :
 µA & mA : 1A/240V Fuse, IR 10kA;
 A : 13A/240V Fuse, IR 10kA;
 V : 780Vrms, 1000Vpeak;
 mV : 600VDC/VAC rms
 Ω & Others : 600VDC/VAC rms
Power Consumption : 2 mA

Dimension : L150mm X W75mm X H34mm;
 L160mm X W82mm X H48mm (with holster)
Weight : 252 gm; 345 gm with holster
Special Features : Wireless Electric Field (EF) detection; Relative zero mode; Data Hold; RS232 PC computer interface capabilities
Accessories : Test leads (pair), holster, battery installed, user's manual
Optional Accessories : Bkp60 banana plug K type thermocouple (BM202 only), BR20X PC interface kit (BC20X RS232 optical adapter cable + BS20X RS232 software floppies)

BM201 & BM202 ELECTRICAL SPECIFICATIONS

ACCURACY IS ± (% READING DIGITS + NUMBER OF DIGITS) OR OTHERWISE SPECIFIED, AT 23°C ± 5°C & LESS THAN 75% R.H.

DC Voltage

RANGE	Accuracy
250.0 mV	0.3% + 4d
2.500V, 25.00V, 250.0V	0.5% + 2d
1000V	1% + 4d

NMRR : >50dB @ 50/60Hz
 CMRR : >100dB @ DC, 50/60Hz, Rs=1kΩ
 Input Impedance : 10MΩ, 15pF nominal

AC Voltage

RANGE	Accuracy
50Hz - 500Hz	
250.0mV	2.0% + 5d*
2.500V	1.0% + 3d
25.00V, 250.0V	1.3% + 3d
750V	2.2% + 6d

CMRR : >60dB @ DC to 60Hz, Rs=1kΩ
 Input Impedance : 10MΩ, 15pF nominal
 *Specified from 50mV

DC Current

RANGE	Accuracy	Burden Voltage
250.0µA	1.5% + 6d	0.15mV/µA
2500µA	0.8% + 3d	0.15mV/µA
25.00mA	2.0% + 6d	3.3mV/mA
250.0mA	1.3% + 3d	3.3mV/mA
2.500A	2.0% + 6d	0.03V/A
10.00A*	1.5% + 5d	0.03V/A

*10A continuous, 20A for 30 second max with 5 minutes cool down interval

AC Current

RANGE	Accuracy	Burden Voltage
50Hz - 500Hz		
250.0µA	2.0%+4d	0.15mV/µA
2500µA	1.0%+4d	0.15mV/µA
25.00mA	2.5%+4d	3.3mV/mA
250.0mA	1.5%+4d	3.3mV/mA
2.500A	2.5%+5d	0.03V/A
10.00A*	2.5%+5d	0.03V/A

*10A continuous, 20A for 30 second max with 5 minutes cool down interval

Diode Tester

Open Circuit Voltage	Test Current (Typical)
<1.8 VDC	1mA

Ohms

RANGE	Accuracy
250.0Ω	0.6% + 8d
2.500kΩ	0.4% + 5d
25.00kΩ, 250.0kΩ	0.4% + 2d
2.500MΩ	
25.00MΩ	1.0% + 4d

Open Circuit Voltage : <0.4VDC

Temperature °C (BM202 standard version)

RANGE	Accuracy*
-20°C TO 300°C	3°C + 3d

*K type thermocouple range & accuracy not included

Temperature °F (BM202 optional version)

RANGE	Accuracy*
-4°F TO 572°F	6°F + 6d

*K type thermocouple range & accuracy not included

Frequency (BM202 only)

Function	Sensitivity (Sine RMS)	Range
250mV	3V	30Hz - 30kHz
2.5V	4V	30Hz - 30kHz
25V	10V	30Hz - 30kHz
250V	80V	30Hz - 30kHz
1000V	550V	30Hz - 1kHz
Ω	500mV	30Hz - 200kHz
µA	900µA	30Hz - 30kHz
mA	120mA	30Hz - 30kHz
A	7A	30Hz - 1kHz

Accuracy: 0.05%+4d

Audible Continuity Tester

Audible threshold : between 20Ω and 150Ω.

Wireless Electric Field (EF) Detection

Typical Voltage	Bar graph indication
30V to 150V	-
60V to 300V	--
100V to 480V	---
300V to 700V	----
above 500V	-----

Indication: Bar graph segments & audible beeper tone proportional to the field strength
 Detection frequency: 50/60Hz
 Detection antenna: Top side of the meter
 (Measurement can also be made through the + input terminal with single test lead for live line polarity detection)

Capacitance (BM202 only)

RANGE	Accuracy*
2.500nF	6.0% + 45d**
25.00nF	2.8% + 4d
250.0nF	1.0% + 4d
2.500µF	1.5% + 4d
25.00µF	2.0% + 4d

*Accuracies with film capacitor or better
 **Specified from 0.25nF



BRYMEN TECHNOLOGY CORPORATION

TEL: +886 2 2226 3396 (rep)

FAX: +886 2 2225 0025

http://www.brymen.com.tw

COPYRIGHT (C) MCMXCVIII B.T.C.

ALL RIGHTS RESERVED

SPECIFICATIONS SUBJECT TO CHANGE WITHOUT NOTICE

P/N BMC 9811

PRINTED IN TAIWAN

Distributor: